

2024 NFHS BASEBALL RULE CHANGES & POINTS OF EMPHASIS

WSBUA - RICH LIONETTI

ESBUA - BRETT THOMPSON





TODAY'S AGENDA

- Provide updates from NYSPHSAA and NYSBUA
- Discuss the 2024 Rule Changes (new)
- Discuss the 2024 Points of Emphasis (new)
- Review the NYS Adopted Rules and Items
- Q&A Session





WESTERN SUFFOLK BASEBALL UMPIRES

RICH LIONETTI

President/Interpreter

631-495-7104

Brian Livingston

Vice President

516-695-7212

westernsuffolkbaseball@gmail.com





EASTERN SUFFOLK BASEBALL UMPIRES

Bill Ambrosini

President

516-457-3583

Eddie Cepeda

Vice President

631-428-4536

Brett Thompson

Rules Interpreter

631-338-3092

bthompson@comsewogue.k12.ny.us





2024 Baseball - Rules Changes



1-6-1

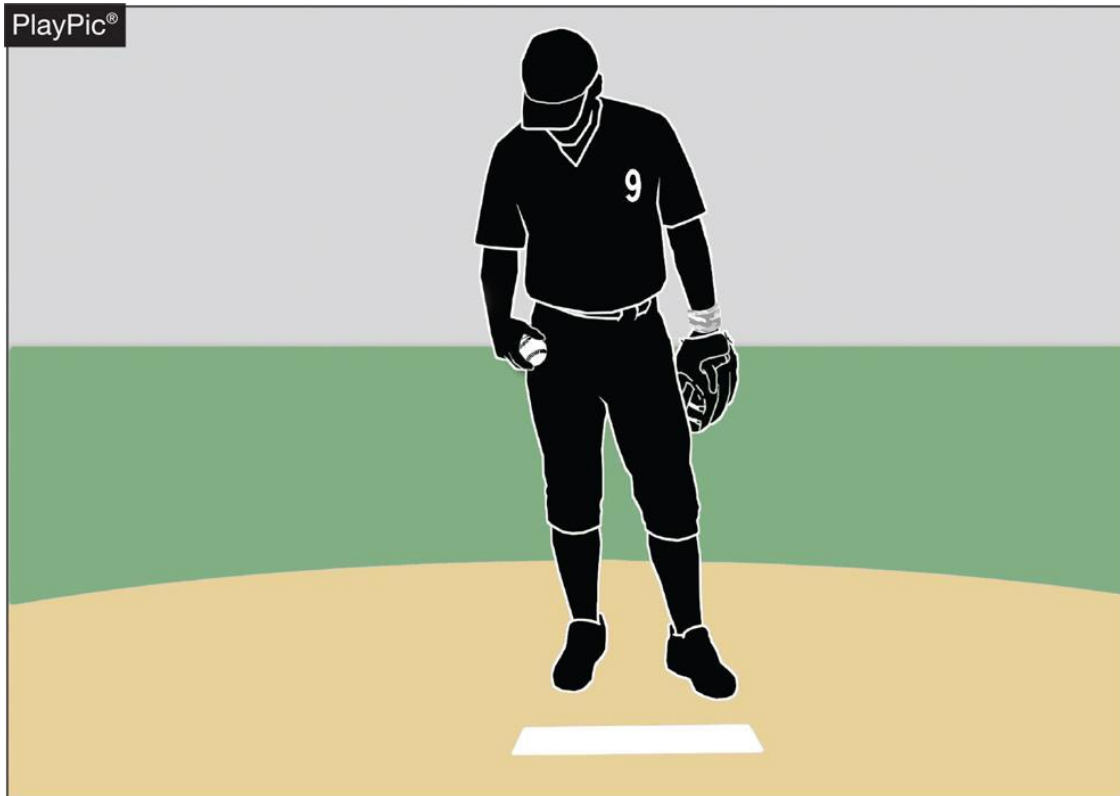
PLAYER COMMUNICATION EQUIPMENT



- Any wristband with defensive shifts, offensive plays, pitching choices, or game directions attached shall be considered non-electronic equipment and is permitted as long as it a single, solid color.

1-6-1

PLAYER COMMUNICATION EQUIPMENT



- For pitchers, it **MAY NOT** contain the colors white, gray or be distracting.
- It **does not** have to match the color of the uniform, or the sleeves worn underneath the uniform.

1-6-1 PLAYER COMMUNICATION EQUIPMENT PITCHERS ONLY

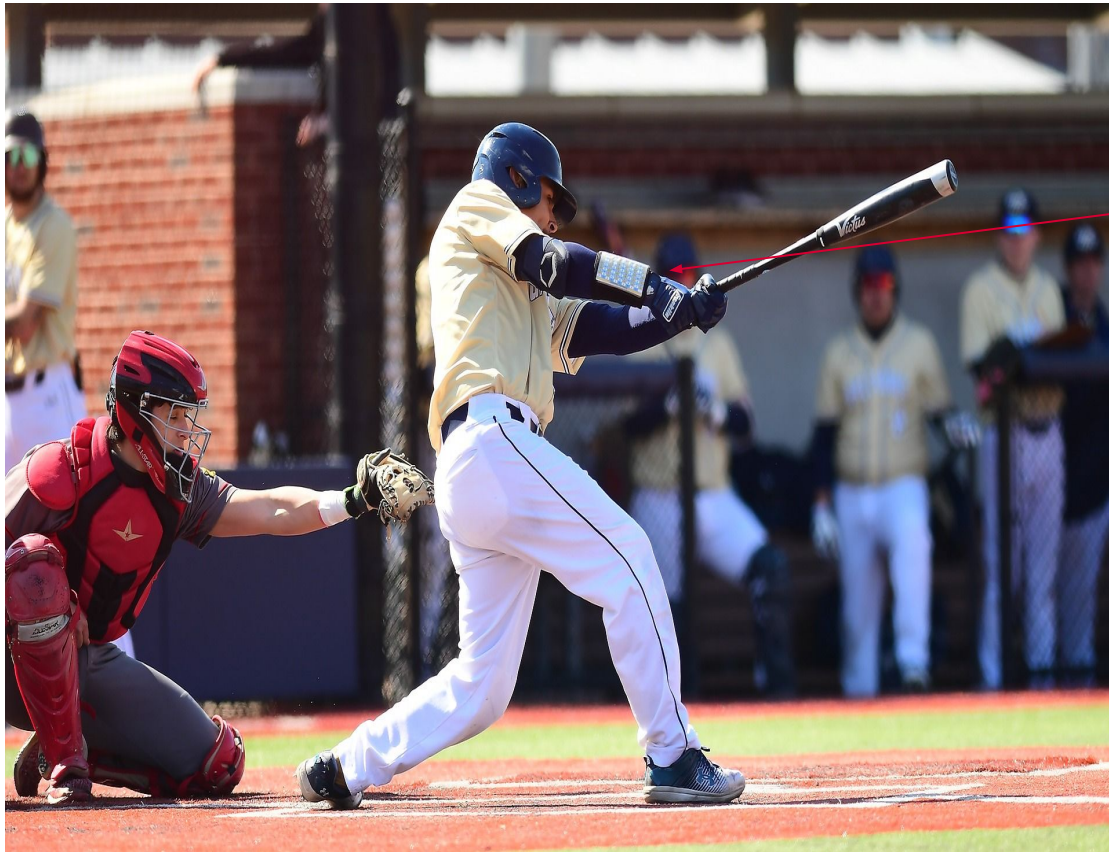


NOT ALLOWED FOR PITCHERS

CARD MUST BE COVERED BY FLAP

1-6-1

PLAYER COMMUNICATION EQUIPMENT

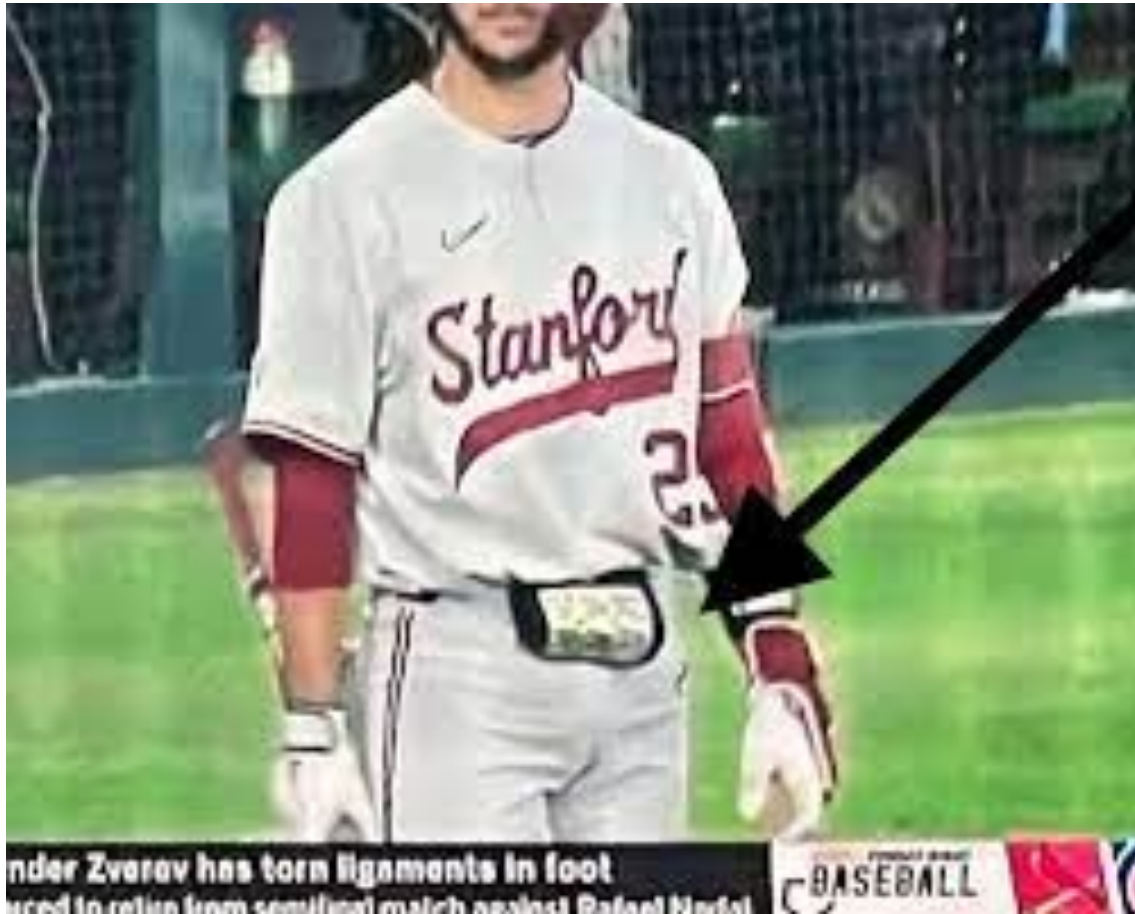


- It shall only be worn on a player's wrist or forearm.
- Pitchers shall wear it on their non-pitching arm.



1-6-1

PLAYER COMMUNICATION EQUIPMENT



- Wristbands **MUST** be worn on the wrist.

THIS IS NO LONGER ALLOWED.

1-6-1

PLAYER COMMUNICATION EQUIPMENT



- The penalty for wearing this equipment improperly is a **team warning to the coach on a first offense.**
- The next offender of that team **will be ejected along with the team's head coach.**



PLAYER COMMUNICATION EQUIPMENT RULE 1-6-1 (NEW SECTION)

ART. 1 . . . Any wristband with defensive shifts/offensive plays/pitching choices or game directions attached shall be considered non-electronic equipment and is permitted as long as it is a single, solid color. For pitchers, it may not contain the colors white, gray or be distracting. It does not have to match the color of the uniform or the sleeves worn underneath the uniform. It shall only be worn on a player(s) wrist or forearm and pitchers shall wear it on their non-pitching arm.

PENALTY: The umpire shall issue a team warning to coach of the team involved and the next offender(s) of that team will be ejected along with the head coach.

Rationale:

Clarification. With the increase in popularity of these style of communication systems, confusion has been realized when the players wear them other than on their arm. This change will prohibit these types of products from being worn other places.





EXAMPLE 1 – THE PLAY

The pitcher is wearing a red wristband on the non-throwing arm. The card within the wristband that contains pitch information on it is white.

What is the ruling?





EXAMPLE 1 – THE ANSWER

- The wristband is illegal and must be removed unless the white card is covered by a flap which is the same color as the wristband.
- **Case Play 1.6.1. Situation B page 14**





PLAYER COMMUNICATION EQUIPMENT

RULE 3-2-5



- One-way electronic communication devices are permissible from the dugout to the catcher ONLY while the team is on defense for the purpose of calling pitches.



PLAYER COMMUNICATION EQUIPMENT

RULE 1-6-2



- When using the electronic communication device, the coach **cannot** be outside the dugout/bench area.
- Various technologies like an earpiece, an electronic band or a smart watch could be used.



PLAYER COMMUNICATION EQUIPMENT RULE 1-6-2 (NEW SECTION)

ART. 2 . . . One-way electronic communication devices are permissible from the dugout to the catcher while the team is on defense for the purpose of calling pitches. When using the electronic communication device, the coach cannot be outside the dugout/bench area.

PENALTY: The umpire shall issue a team warning to coach of the team involved and the next offender(s) of that team will be ejected along with the head coach.

Rationale:

This rule allows for a team to utilize an electronic device for the purpose of calling pitches from the dugout. The device would only be able to be one-way, meaning the player cannot use an electronic device to respond or communicate back to the coach. Various technologies, earpiece, electronic band or a smart watch could be used giving teams several options at varying costs. No other player would be able to wear or use this device nor would the coach be able to communicate with any other player using electronic communication.





EXAMPLE 2 – THE PLAY

The catcher is wearing a one-way electronic communication device on his wrist. In the 6th inning, the catcher notices the wristwatch is no longer working. The Head Coach requests a time out to visit with the catcher near home plate in an attempt to fix the wristwatch.

What is the ruling?





EXAMPLE 2 – THE ANSWER

- This is permitted but the defensive team is charged with a defensive conference.
- **Case Play 1.6.2. Situation D page 15**





COACHING (PLAYER COMMUNICATION EQUIPMENT) RULE 3-2-5



- Coaches may not use electronic communication device(s) to communicate with any other team member other than the catcher while on defense (including any team member while on offense).



COACHING (PLAYER COMMUNICATION EQUIPMENT) RULE 3-2-5



- The penalty for improper use is a **team warning on the first offense.**
- The next offender of that team **will be ejected along with the team's head coach.**



COACHING RULE 3-2-5

ART. 5 . . . A coach may use a one-way electronic communication device to communicate to the catcher for the purpose of calling pitches. Coaches may not use electronic communication device(s) to communicate with any other team member while on defense or any team member while on offense. When using the electronic communication device, the coach cannot be outside the dugout/bench area.

PENALTY: The umpire shall issue a team warning to coach of the team involved and the next offender(s) of that team will be ejected along with the head coach.

Rationale:

Allows for the coach to communicate with the catcher using an electronic communication device for the purpose of calling pitches.





EXAMPLE 3 – THE PLAY

The Head Coach and Pitching Coach both want to have access to the one-way electronic communication device they use to communicate with the catcher.

What is the ruling?





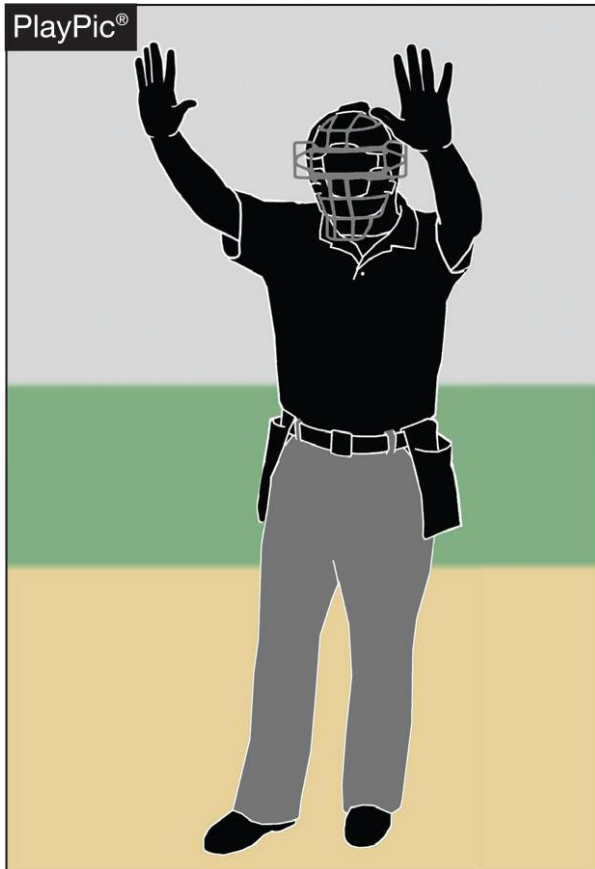
EXAMPLE 3 – THE ANSWER

- This would not be allowed.
- Only one communication device is allowed in the dugout/bench.
- Either the head coach or the pitching coach is allowed access to the device.
- **Case Play 1.6.2. Situation A page 14**





UMPIRE-IN-CHIEF RULE 10-2-3h



- The umpire-in-chief may forfeit the game for prescribed infractions by **coaches, players or team/bench personnel.**



UMPIRE-IN-CHIEF RULE 10-2-3h



- Umpires have jurisdiction over the confines of the players, coaches and team/bench personnel.
- If there are issues with spectators, **it is the responsibility of game management** to deal with spectators and to ensure the facility is safe for all involved.



UMPIRE-IN-CHIEF RULE 10-2-3h

h. Forfeit the game for prescribed infractions by ~~spectators~~, coaches, players or team/bench personnel.

Rationale:

Umpires have jurisdiction over the confines of the field, players, coaches and team/bench personnel. If there are issues with spectators, it is the responsibility of game management to deal with spectators and to ensure that the facility is safe for all involved.

IF NO GAME MANAGEMENT IS PRESENT, COACHES WILL BE ASKED TO HELP ADDRESS SPECTATORS BEHAVIOR AND/OR ACTIONS.





2024 NFHS BASEBALL POINTS OF EMPHASIS



MALICIOUS CONTACT



- Malicious contact can be initiated by either an offensive or defensive player(s).
- It **should not** be confused with incidental contact or “train wreck” plays that sometimes occur in baseball.

MALICIOUS CONTACT



- Contact or a collision is considered to be malicious **if it the result of excessive force and/or there is an intent to injure.**
- The absence of these two conditions does not preclude the presence of malicious contact but would provide a reasonable starting point for proper interpretation.



PROFANITY (DIRECT OR INDIRECT)



- Education-based athletics is a direct extension of the classroom.
- There is no excuse for foul language in school or on the baseball field.

PROFANITY (DIRECT OR INDIRECT)



- The penalties are:
 - a verbal warning to the offender on the first offense
 - a written warning to the offender that warrants restriction to the dugout for the remainder of the game for a second offense
 - ejection for a major offense.



PACE OF PLAY



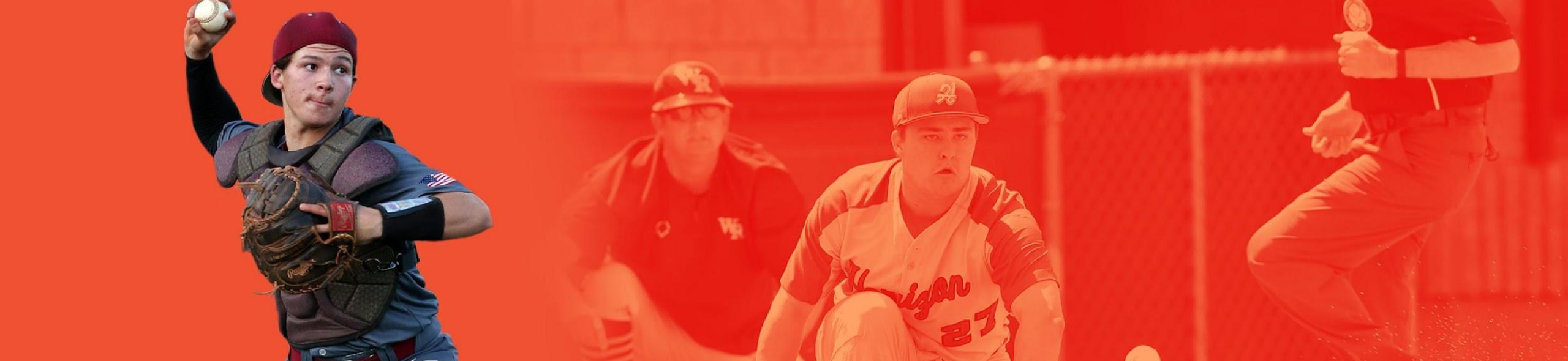
- A 20-second time limit rule has been in the NFHS rules book since the 1970s.
- The rule is meant to only be utilized **when other preventive umpiring measures fail to achieve a reasonable pace or rhythm.**



PACE OF PLAY



- By rule, the time between the last out of one half-inning and the first pitch of the next half-inning is **1 minute, 20 sec.**
- Umpires should facilitate this and refrain from visiting with fans or having prolonged discussions with other crew members.



NY STATE ADOPTED RULES





NY STATE ADOPTED RULES – PAGE 69

- ~~1-2-9~~: We do not allow a double-first base.
- **1-4-4**: To allow for special occasions, commemorative or memorial patches, that will be uniformly placed, not to exceed 4 square inches, to be worn on jerseys in an appropriate and dignified manner without compromising the integrity of the uniform.
 - Contact NYSPHSAA if you any questions regarding this.





NY STATE ADOPTED RULES – PAGE 69

- **4-2-2:** 10 run rule. Each section has the option to approve the rule and then each league has the option to approve the rule.
- **4-2-4:** Game-ending procedures may be determined.
- ~~**4-3-1:** Cross out! We do not have this rule.~~
- **4-4-1a:** State associations are authorized to specify the time frame and/or circumstances before a forfeit shall be declared for a late arrival by one of the teams.
- **4-5-1:** Protests are allowed in NY.
- **10-1-9:** Each chapter received an updated uniform code.





COURTESY RUNNERS APPROVED FOR 2024

- **At any time**, the team at bat may use courtesy runners for the pitcher and/or the catcher.
- If the offensive team bats around, the pitcher and/or catcher who had a courtesy runner on their behalf may bat in their lineup position.
- The same individual player may not be used as a courtesy runner for both positions (pitcher and catcher) during the game.
- Players who have participated in the game in any other capacity are **ineligible** to serve as courtesy runners.

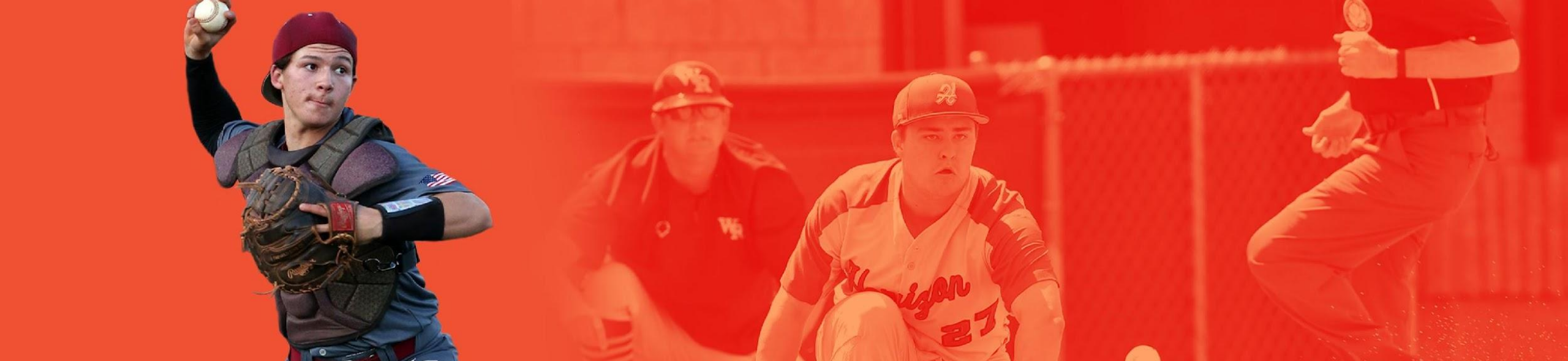




COURTESY RUNNERS APPROVED FOR 2024

- A player **may not** run as a courtesy runner for the pitcher or the catcher and then be used as a sub for another player in that half inning.
- The home plate umpire **shall** record courtesy runners on their lineup cards and announce it to the official scorer.
- A player who violates the courtesy-runner rule is considered to be **an illegal substitute**.
- Should an injury, illness, or ejection occur to the courtesy runner, another courtesy runner for the pitcher or catcher may be used.





SITUATIONS AND PLAYS TO DISCUSS





SITUATION 1 – THE PLAY

The home team is utilizing Salada as the P/DH. In the second inning, Salada hits a double. The home team coach now comes to the plate umpire and tells the umpire that Connors will be a courtesy runner for Salada.

What is the ruling?





SITUATION 1 – THE ANSWER

- The home plate umpire will **NOT ALLOW** the use of Connors as a courtesy runner for Salada.
- When Salada comes to bat, he bats as a DH and not as a pitcher.
- Courtesy runners are not allowed for a DH.
- **Casebook Page 96 CR Situation 18**





SITUATION 2 – THE PLAY

A 2-2 pitch is thrown behind the batter, Lewis, and makes contact with Lewis' sliding glove ("oven mitt" type glove) which was in his back pocket.

What is the ruling?





SITUATION 2 – THE ANSWER

- Call time out and award the batter first base.
- The batter's person is defined to be a player's body, as well as the hat, helmet, uniform, shoes, protective gear, etc. worn correctly and normally.
- The person of a player **does not** include jewelry.
- The umpire may instruct the batter to remove the sliding gloves from the pocket when at-bat.
- **Rule 8-1-1d and Casebook Page 69 8.1.1 Situation Q**





**THANK YOU AND HAVE A GREAT
BASEBALL SEASON!**

